

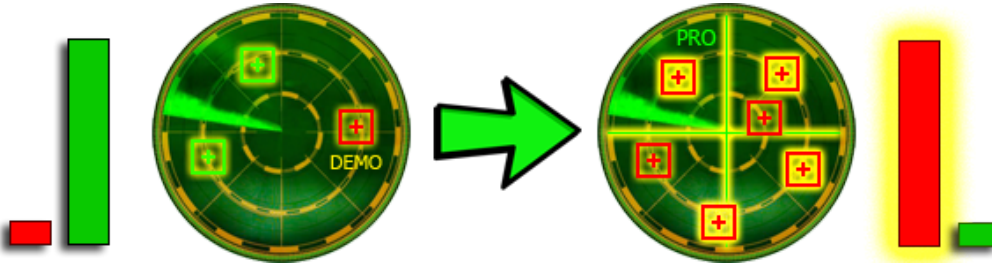
# Plagiarism Detector v. 1872 - Originality Report 22/03/2021 12:34:51

Analyzed document: ABSTRAK Frumarion Amalo Meti.docx Licensed to: Originality report generated by unregistered Demo version!

- Comparison Preset: Rewrite
- Detected language:
- Check type: Internet Check

Warning: Demo Version - reports are incomplete!

Detect **more Plagiarism** with **Licensed Plagiarism Detector**:



Order your **Lifetime License** packed with features:

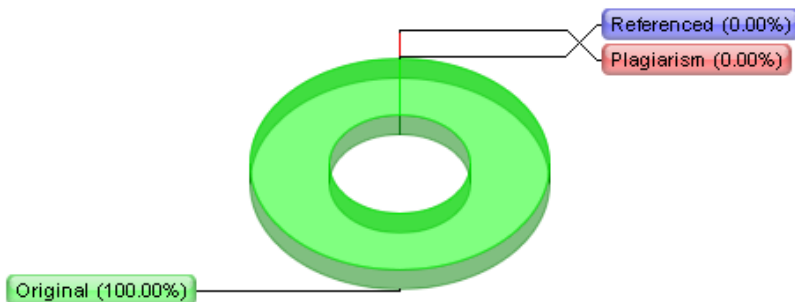
- Complete** resources processing - with **more results!**
- Side-by-side compare** with detailed analysis!
- Faster** processing **speed, deeper detection!**
- Advanced statistics**, Originality Reports management!
- Many other **cool functions** and **options!**

Get your **5% discount**:



Detailed document body analysis:

Relation chart:



Distribution graph:

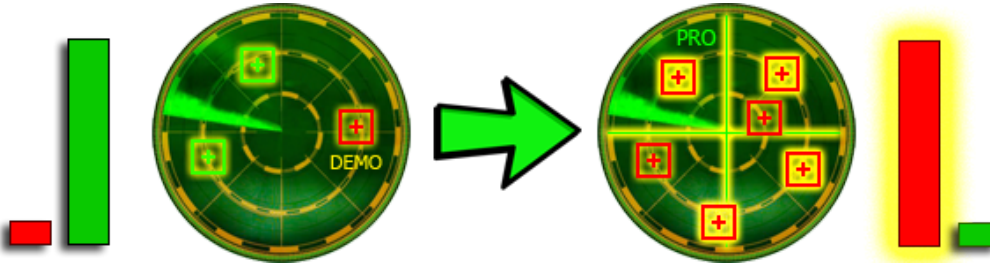
# Plagiarism Detector v. 1872 - Originality Report 22/03/2021 12:27:17

Analyzed document: SKRIPSI Frumarion Amalo Meti.docx Licensed to: Originality report generated by unregistered Demo version!

? Comparison Preset: Rewrite ? Detected language:  
? Check type: Internet Check

Warning: Demo Version - reports are incomplete!

Detect **more Plagiarism** with **Licensed Plagiarism Detector**:



Order your **Lifetime License** packed with features:

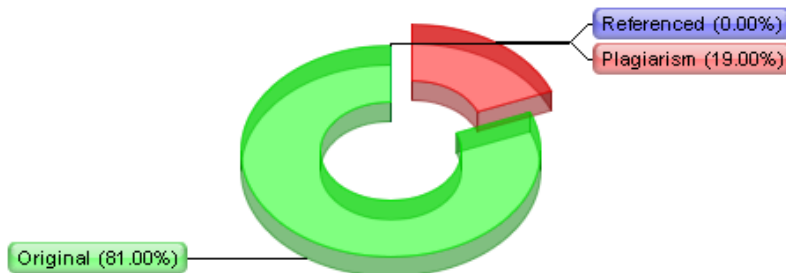
1. **Complete** resources processing - with **more results!**
2. **Side-by-side compare** with detailed analysis!
3. **Faster** processing **speed, deeper detection!**
4. **Advanced statistics**, Originality Reports management!
5. Many other **cool functions** and **options!**

Get your **5% discount**:



Detailed document body analysis:

? Relation chart:



? Distribution graph:

## Lampiran 1 : Kuisisioner Penelitian

### **SURAT PERMOHONAN PENGISIAN KUISISIONER**

Hal : Permohonan pengisian kuisisioner

Yth.Bapak/Ibu Responden

Ditempat

Dengan hormat,

Untuk memenuhi sebagian persyaratan menyelesaikan pendidikan Program Studi Teknik Sipil Universitas Flores, saya memerlukan beberapa informasi sebagai bahan penulisan skripsi yang berjudul “ **Analisis Tingkat Kepuasan Masyarakat Terhadap Sarana Dan Prasarana Gedung Puskesmas Kota Ende**”.

Sehubungan dengan itu, saya memohon kesediaan Bapak/Ibu untuk mengisi kuisisioner ini sesuai dengan petunjuk yang ada pada kuisisioner ini. Kuisisioner ini didesain untuk mengukur tingkat kepuasan terhadap sarana dan prasarana puskesmas kota ende.

Seluruh informasi yang diperoleh dari kuisisioner ini hanya akan saya gunakan untuk keperluan penelitian dan saya menjaga kerahasiaanya sesuai dengan etika penelitian.

Atas ketersediaan Bapak/Ibu yang telah meluangkan waktunya untuk mengisi kuisisioner ini, saya mengucapkan terimakasih.

# KUISIONER TINGKAT KEPUASAN SARANA DAN PRASARANA GEDUNG PUSKESMAS KOTA ENDE

(JL.KOKOS RAYA – KEL.MAUTAPAGA – KEC.ENDE TIMUR)

## 1. PETUNJUK PENGISIAN:

- a) Isilah identitas yang telah disediakan
- b) Pilih alternatif jawaban dari setiap pertanyaan sesuai dengan keadaan yang sebenarnya dengan cara memberi tanda check-list(√) pada kolom yang telah disediakan

## 2. DATA DIRI RESPONDEN

### a) Usia

<b>Usia</b>	<b>Check List (√)</b>
17-25 Tahun	
26-45 Tahun	
46-65 Tahun	
65-Keatas	

### b) Pekerjaan

<b>Pekerjaan</b>	<b>Check List (√)</b>
Tamat SD	
Tamat SMP	
Tamat SMA	
Sarjana	
Tidak Sekolah	

### c) Pendidikan :

<b>Pendidikan</b>	<b>Check List (√)</b>
PNS	
Wiraswasta	
Pegawai Swasta	
Buruh	
Ibu Rumah Tangga	

3.Keterangan :

Keterangan	Skor
Sangat Puas	4
Puas	3
Tidak Puas	2
Sangat Tidak Puas	1

Contoh :

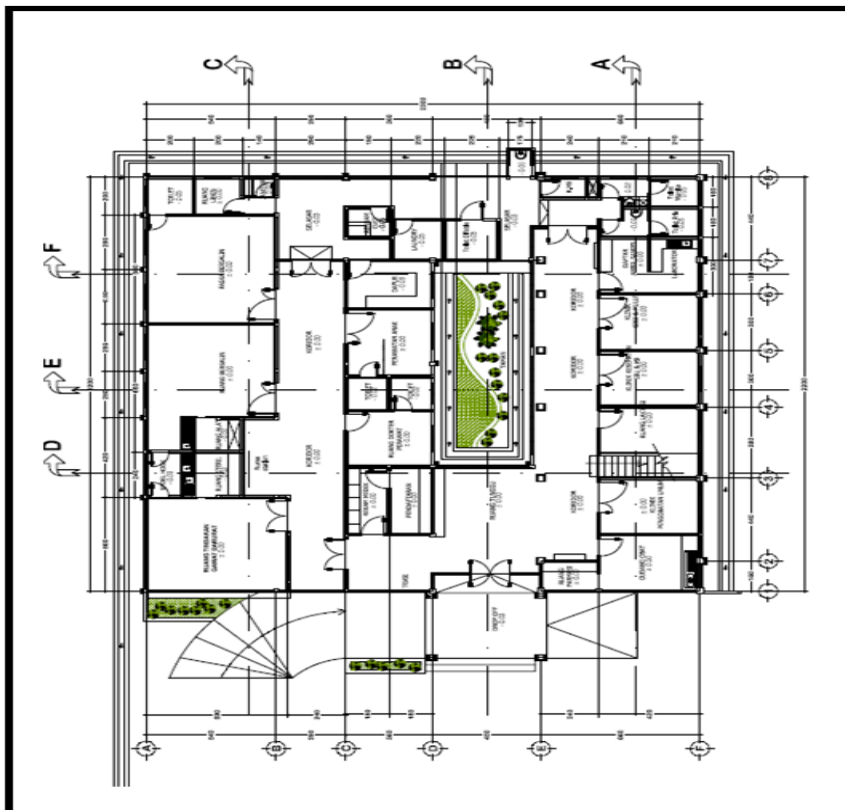
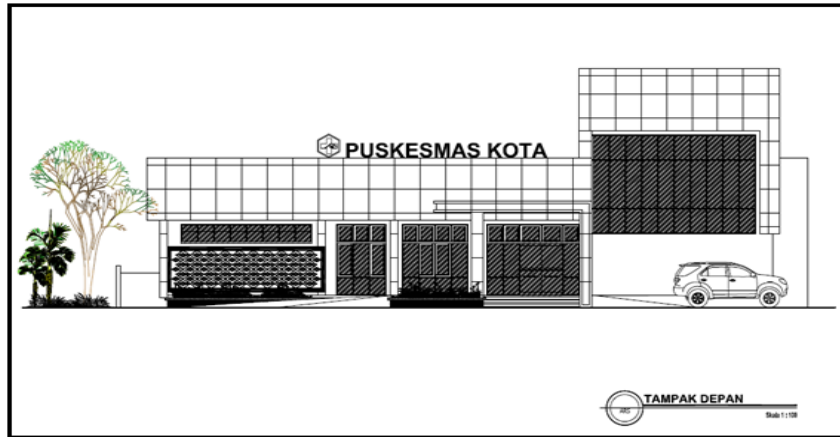
No	Kriteria	SP	P	KP	STP
1	Tingkat kepuasan terhadap bangunan Puskesmas kota Ende	√			

no	Kriteria	Tingkat Kepuasan			
		SP	P	TP	STP
<b>A</b>	<b><i>Tangibles/Bukti nyata</i></b>				
1	Tingkat kepuasan terhadap bangunan Puskesmas kota Ende				
2	Tingkat kepuasan terhadap ruang tunggu.				
3	Tingkat kepuasan terhadap toilet dan air bersih.				
4	Tingkat kepuasan terhadap Lokasi dengan batas dan pagar				
<b>B</b>	<b><i>Reability/Keandalan</i></b>				
1	Tingkat kepuasan terhadap Kerapian penataan ruang				
2	Tingkat kepuasan terhadap Komponen bangunan (atap, langit-langit, dinding, lantai, pintu dan jendela)				
3	Tingkat kepuasan terhadap Sistem kelistrikan dan pencahayaan				
4	Tingkat kepuasan terhadap Sistem sanitasi (air bersih, air limbah dan pembuangan limbah padat medis dan non medis)				

<b>C</b>	<b>Responsive/Tanggapan</b>			
1	Tingkat kepuasan terhadap Tempat duduk/kursi			
2	Tingkat kepuasan terhadap akses masuk kedalam puskesmas (pintu utama)			
3	Tingkat kepuasan terhadap Saluran air			
4	Tingkat kepuasan terhadap peralatan medis			
<b>D</b>	<b>Empati</b>			
1	Tingkat kepuasan terhadap Tangga naik ke lantai 2			
2	Tingkat kepuasan terhadap Tempat penampungan sampah			
3	Tingkat kepuasan terhadap sistem ventilasi			
4	Tingkat kepuasan terhadap kapasitas ruang tunggu			
<b>E</b>	<b>Assurance/Jaminan</b>			
1	Tingkat kepuasan pasien yang tidak terganggu dengan kebisingan kendaraan yang melewati Puskesmas			
2	Tingkat kepuasan terhadap aksesibilitas untuk jalur transportasi			
3	Tingkat kepuasan terhadap tempat parkir			
4	Tingkat kepuasan terhadap Kenyamanan pasien saat berada diruang antrian			

Lampiran 2 : Denah Puskesmas Kota Ende

(Jl.kokos Raya-kel.mautapaga-Kec.Ende TImur)



**Lampiran 3 : Tabel rekapitulasi jawaban responden**

.Tangibles/Bukti nyata

no	Pertanyaan				Jumlah
	1	2	3	4	
1	3	3	3	3	12
2	4	3	3	3	13
3	4	3	3	3	13
4	4	3	3	3	13
5	3	3	3	2	11
6	3	3	3	3	12
7	4	3	3	3	13
8	3	3	3	2	11
9	4	3	3	4	14
10	3	3	3	2	11
11	4	3	3	3	13
12	3	3	3	2	11
13	3	3	3	3	12
14	3	3	3	2	11
15	3	3	3	4	13
16	4	3	3	4	14
17	4	3	3	4	14
18	4	3	3	3	13
19	4	3	3	4	14
20	4	3	3	3	13
21	4	3	3	3	13
22	4	3	4	3	14
23	4	3	3	3	13
24	3	3	4	3	13
25	4	4	3	3	14
26	3	3	2	3	11
27	4	3	3	3	13
28	3	3	3	3	12
29	3	3	3	3	12
30	4	3	3	3	13
31	4	4	4	4	16
32	4	4	3	4	15
33	4	4	4	4	16
34	4	3	3	3	15
35	4	3	4	3	14
36	3	3	3	3	12
37	3	3	3	3	12
38	4	3	3	3	12



39	3	3	3	4	13
40	3	3	3	4	13
41	4	3	3	3	13
42	4	3	3	3	13
43	4	3	4	3	14
44	3	3	3	4	13
45	4	3	4	4	15
46	3	3	3	3	12
47	3	4	3	3	13
48	3	3	3	3	12
49	4	3	3	4	14
50	3	3	3	3	12
51	3	3	3	3	12
52	3	3	3	3	12
53	3	3	3	3	12
54	4	4	3	3	14
55	3	4	3	4	14
56	2	3	3	4	12
57	3	3	3	3	12
58	3	3	3	3	12
59	3	3	3	3	12
60	3	3	2	2	10
61	4	3	3	3	13
62	3	3	3	3	12
63	4	3	3	3	12
64	4	3	3	4	14
<b>Jumlah</b>	<b>223</b>	<b>199</b>	<b>197</b>	<b>202</b>	<b>821</b>

#### B.Reability/Keandalan

no	Pertanyaan				Jumlah
	1	2	3	4	
1	3	4	4	3	<b>14</b>
2	4	3	3	3	<b>13</b>
3	3	3	3	3	<b>13</b>
4	3	3	3	3	<b>12</b>
5	3	3	3	3	<b>12</b>
6	3	3	3	3	<b>12</b>
7	3	3	3	3	<b>12</b>
8	3	3	3	3	<b>12</b>
9	3	3	4	3	<b>13</b>
10	3	3	3	3	<b>12</b>

11	3	3	3	3	<b>12</b>
12	3	3	3	4	<b>13</b>
13	3	3	3	3	<b>12</b>
14	3	3	3	3	<b>12</b>
15	3	3	3	3	<b>12</b>
16	3	3	3	3	<b>12</b>
17	4	4	3	3	<b>14</b>
18	3	3	3	3	<b>12</b>
19	4	4	3	3	<b>14</b>
20	4	4	3	3	<b>14</b>
21	4	4	4	4	<b>16</b>
22	4	4	3	3	<b>14</b>
23	3	3	3	3	<b>12</b>
24	3	3	3	3	<b>12</b>
25	3	4	4	3	<b>14</b>
26	4	4	3	3	<b>14</b>
27	3	3	3	3	<b>12</b>
28	3	3	3	3	<b>12</b>
29	3	4	3	3	<b>13</b>
30	3	4	4	3	<b>14</b>
31	4	4	3	3	<b>14</b>
32	4	4	4	3	<b>16</b>
33	4	4	4	4	<b>16</b>
34	4	3	3	3	<b>13</b>
35	4	3	3	3	<b>13</b>
36	3	4	3	3	<b>13</b>
37	3	3	3	3	<b>12</b>
38	3	3	3	3	<b>12</b>
39	3	3	3	3	<b>12</b>
40	3	3	3	3	<b>12</b>
41	3	4	4	4	<b>14</b>
42	3	3	3	3	<b>16</b>
43	4	3	4	3	<b>14</b>
44	3	3	4	3	<b>13</b>
45	4	4	4	4	<b>16</b>
46	4	3	3	3	<b>13</b>
47	4	3	3	3	<b>13</b>
48	4	4	4	4	<b>16</b>
49	4	4	3	3	<b>14</b>
50	3	3	3	3	<b>12</b>
51	3	3	3	3	<b>12</b>
52	3	3	3	3	<b>12</b>
53	4	4	4	3	<b>15</b>
54	3	3	3	3	<b>12</b>

55	3	2	3	3	11
56	4	3	4	4	15
57	3	3	3	3	12
58	3	3	3	3	12
59	3	3	3	3	12
60	2	3	3	3	12
61	4	3	3	4	14
62	3	3	3	3	12
63	4	4	3	4	15
64	3	4	4	3	14
Jumlah	<b>213</b>	<b>212</b>	<b>207</b>	<b>201</b>	<b>839</b>

### C. Responsive/Tanggapan

no	Pertanyaan				Jumlah
	1	2	3	4	
1	3	3	3	3	12
2	3	3	3	3	12
3	3	3	3	3	12
4	2	3	3	3	11
5	2	3	3	3	11
6	3	3	3	3	12
7	3	3	3	3	12
8	3	3	3	3	12
9	2	3	3	3	11
10	3	2	3	3	11
11	2	3	3	3	11
12	3	2	3	3	11
13	4	4	3	3	14
14	2	3	3	3	11
15	2	3	3	3	11
16	2	3	3	3	11
17	2	3	3	4	11
18	3	3	3	3	12
19	3	3	3	3	12
20	3	3	3	3	12
21	3	3	3	3	12
22	3	3	3	3	12
23	3	4	3	3	13
24	3	2	3	3	13
25	4	4	4	3	15
26	3	3	3	3	12
27	3	3	3	3	12

28	4	4	4	4	<b>16</b>
29	3	3	3	4	<b>13</b>
30	3	4	3	4	<b>14</b>
31	3	3	3	4	<b>13</b>
32	4	3	3	4	<b>14</b>
33	4	4	3	3	<b>14</b>
34	3	3	3	3	<b>12</b>
35	3	3	3	3	<b>12</b>
36	4	3	3	3	<b>13</b>
37	3	3	3	3	<b>12</b>
38	3	3	3	3	<b>12</b>
39	3	3	3	3	<b>12</b>
40	3	3	3	3	<b>12</b>
41	3	3	2	3	<b>11</b>
42	3	3	3	3	<b>12</b>
43	4	3	3	3	<b>13</b>
44	3	3	3	3	<b>12</b>
45	4	3	4	3	<b>14</b>
46	3	3	3	3	<b>12</b>
47	3	3	3	4	<b>13</b>
48	4	3	4	3	<b>14</b>
49	4	3	3	3	<b>13</b>
50	3	3	3	3	<b>12</b>
51	3	3	3	3	<b>12</b>
52	3	3	3	3	<b>12</b>
53	4	4	3	4	<b>15</b>
54	4	4	3	3	<b>14</b>
55	3	3	3	3	<b>12</b>
56	4	4	4	3	<b>15</b>
57	3	3	3	3	<b>12</b>
58	3	3	3	3	<b>12</b>
59	3	3	3	3	<b>12</b>
60	3	2	3	3	<b>11</b>
61	4	4	3	3	<b>14</b>
62	3	3	3	3	<b>12</b>
63	4	4	4	3	<b>15</b>
64	4	3	4	3	<b>14</b>
<b>Jumlah</b>	<b>200</b>	<b>199</b>	<b>198</b>	<b>200</b>	<b>798</b>

D. Empati

no	Pertanyaan				Jumlah
	1	2	3	4	
1	3	3	3	2	<b>11</b>
2	3	3	3	3	<b>12</b>
3	3	2	3	3	<b>11</b>
4	2	3	3	3	<b>11</b>
5	3	2	3	3	<b>11</b>
6	3	2	3	3	<b>11</b>
7	3	2	3	3	<b>11</b>
8	3	2	3	3	<b>11</b>
9	3	2	3	3	<b>11</b>
10	3	2	3	3	<b>11</b>
11	3	2	3	3	<b>11</b>
12	3	2	3	2	<b>10</b>
13	3	3	4	4	<b>14</b>
14	3	2	3	2	<b>10</b>
15	3	2	3	3	<b>11</b>
16	2	2	3	3	<b>10</b>
17	2	2	3	3	<b>10</b>
18	3	3	3	3	<b>12</b>
19	3	3	3	3	<b>12</b>
20	3	3	3	3	<b>12</b>
21	3	3	3	3	<b>12</b>
22	3	3	3	4	<b>13</b>
23	3	3	3	3	<b>12</b>
24	3	2	3	2	<b>10</b>
25	3	4	3	3	<b>13</b>
26	3	3	3	3	<b>12</b>
27	3	3	3	3	<b>12</b>
28	4	4	4	4	<b>16</b>
29	3	3	4	3	<b>13</b>
30	3	3	4	3	<b>13</b>
31	3	3	3	3	<b>12</b>
32	4	3	3	3	<b>13</b>
33	4	3	3	3	<b>13</b>
34	4	3	3	3	<b>13</b>
35	3	3	3	3	<b>12</b>
36	3	3	4	3	<b>13</b>
37	3	3	3	3	<b>12</b>
38	3	3	3	3	<b>12</b>
39	3	3	3	3	<b>12</b>
40	3	3	3	3	<b>12</b>
41	3	3	4	3	<b>12</b>

42	2	3	3	3	<b>11</b>
43	3	4	3	3	<b>13</b>
44	3	4	3	4	<b>14</b>
45	4	3	4	4	<b>15</b>
46	3	3	3	3	<b>12</b>
47	3	2	3	3	<b>11</b>
48	4	4	3	3	<b>14</b>
49	3	3	3	4	<b>13</b>
50	3	3	3	3	<b>12</b>
51	3	3	3	3	<b>12</b>
52	3	2	3	3	<b>11</b>
53	4	4	4	4	<b>16</b>
54	3	3	3	4	<b>13</b>
55	3	3	3	3	<b>12</b>
56	4	4	4	3	<b>15</b>
57	3	3	3	3	<b>12</b>
58	3	3	3	3	<b>12</b>
59	3	3	3	2	<b>11</b>
60	3	3	2	2	<b>10</b>
61	3	3	3	4	<b>13</b>
62	3	3	3	3	<b>12</b>
63	4	3	4	3	<b>14</b>
64	4	3	4	4	<b>15</b>
<b>Jumlah</b>	<b>198</b>	<b>183</b>	<b>202</b>	<b>196</b>	<b>778</b>

E. Assurance/Jaminan

no	Pertanyaan				Jumlah
	1	2	3	4	
1	4	4	3	4	15
2	3	3	2	3	13
3	3	3	2	3	11
4	3	3	2	3	11
5	3	3	3	4	13
6	3	3	3	3	12
7	3	3	3	2	11
8	2	3	2	3	10
9	3	3	2	3	11
10	3	3	2	3	11
11	3	3	2	3	11
12	2	3	2	2	9
13	4	4	4	4	16
14	3	3	2	2	10

15	3	3	3	3	12
16	3	3	3	3	12
17	3	3	2	3	11
18	3	3	3	3	12
19	4	3	3	3	13
20	4	3	3	3	13
21	4	4	3	3	14
22	3	3	3	3	11
23	4	3	3	3	12
24	2	2	2	3	9
25	3	3	3	4	13
26	3	3	3	3	12
27	3	3	3	3	12
28	4	4	4	3	16
29	3	3	2	3	11
30	3	3	2	3	11
31	3	3	3	4	13
32	3	3	4	4	14
33	4	3	3	3	13
34	4	3	3	3	13
35	3	3	3	3	12
36	3	3	3	3	12
37	3	3	3	3	12
38	3	3	3	3	12
39	3	3	3	3	12
40	3	3	3	3	12
41	2	3	2	2	9
42	3	3	3	3	12
43	3	3	3	3	12
44	3	3	3	3	12
45	4	3	4	4	14
46	4	3	3	3	13
47	3	3	2	3	11
48	4	4	4	4	14
49	3	3	3	3	12
50	3	3	3	3	12
51	3	3	3	3	12
52	2	2	3	2	9
53	3	4	3	3	13
54	3	3	3	3	12
55	3	3	3	3	12
56	4	4	4	3	15
57	3	3	3	3	12
58	3	3	3	3	12

59	2	3	3	3	11
60	2	3	3	3	11
61	3	3	3	4	13
62	3	3	3	3	12
63	4	4	4	4	16
64	4	3	4	4	15
Jumlah	<b>200</b>	<b>198</b>	<b>185</b>	<b>198</b>	<b>779</b>



#### Lampiran 4 : Analisa validasi dan Realibilitas

##### A.Tangibles/Bukti nyata

no	Pertanyaan				Jumlah
	1	2	3	4	
1	3	3	3	3	12
2	4	3	3	3	13
3	4	3	3	3	13
4	4	3	3	3	13
5	3	3	3	2	11
6	3	3	3	3	12
7	4	3	3	3	13
8	3	3	3	2	11
9	4	3	3	4	14
10	3	3	3	2	11
11	4	3	3	3	13
12	3	3	3	2	11
13	3	3	3	3	12
14	3	3	3	2	11
15	3	3	3	4	13
16	4	3	3	4	14
17	4	3	3	4	14
18	4	3	3	3	13
19	4	3	3	4	14
20	4	3	3	3	13
21	4	3	3	3	13
22	4	3	4	3	14
23	4	3	3	3	13
24	3	3	4	3	13
25	4	4	3	3	14
26	3	3	2	3	11
27	4	3	3	3	13
28	3	3	3	3	12
29	3	3	3	3	12
30	4	3	3	3	13
31	4	4	4	4	16
32	4	4	3	4	15
33	4	4	4	4	16
34	4	3	3	3	15
35	4	3	4	3	14
36	3	3	3	3	12
37	3	3	3	3	12
38	4	3	3	3	12

39	3	3	3	4	13
40	3	3	3	4	13
41	4	3	3	3	13
42	4	3	3	3	13
43	4	3	4	3	14
44	3	3	3	4	13
45	4	3	4	4	15
46	3	3	3	3	12
47	3	4	3	3	13
48	3	3	3	3	12
49	4	3	3	4	14
50	3	3	3	3	12
51	3	3	3	3	12
52	3	3	3	3	12
53	3	3	3	3	12
54	4	4	3	3	14
55	3	4	3	4	14
56	2	3	3	4	12
57	3	3	3	3	12
58	3	3	3	3	12
59	3	3	3	3	12
60	3	3	2	2	10
61	4	3	3	3	13
62	3	3	3	3	12
63	4	3	3	3	12
64	4	3	3	4	14
Jumlah	<b>223</b>	<b>199</b>	<b>197</b>	<b>202</b>	<b>821</b>

1. Pertanyaan nomor 2

no	X	Y	$X^2$	$Y^2$	XY
1	3	12	9	144	36
2	3	13	9	169	39
3	3	13	9	169	39
4	3	13	9	169	39
5	3	11	9	121	33
6	3	12	9	144	36
7	3	13	9	169	39
8	3	11	9	121	33
9	3	14	9	196	42
10	3	11	9	121	33
11	3	13	9	169	39
12	3	11	9	121	33
13	3	12	9	144	36
14	3	11	9	121	33
15	3	13	9	169	39
16	3	14	9	196	42
17	3	14	9	196	42
18	3	13	9	169	39
19	3	14	9	196	42
20	3	13	9	169	39
21	3	13	9	169	39
22	3	14	9	196	42
23	3	13	9	169	39
24	3	13	9	169	39
25	4	14	16	196	56
26	3	11	9	121	33
27	3	13	9	169	39
28	3	12	9	144	36
29	3	12	9	144	36
30	3	13	9	169	39
31	4	16	16	256	64
32	4	15	16	225	60
33	4	16	16	256	64
34	3	15	9	225	45
35	3	14	9	196	42
36	3	12	9	144	36
37	3	12	9	144	36
38	3	12	9	144	36
39	3	13	9	169	39
40	3	13	9	169	39
41	3	13	9	169	39
42	3	13	9	169	39

43	3	14	9	196	42
44	3	13	9	169	39
45	3	15	9	225	45
46	3	12	9	144	36
47	4	13	16	169	52
48	3	12	9	144	36
49	3	14	9	196	42
50	3	12	9	144	36
51	3	12	9	144	36
52	3	12	9	144	36
53	3	12	9	144	36
54	4	14	16	196	56
55	4	14	16	196	56
56	3	12	9	144	36
57	3	12	9	144	36
58	3	12	9	144	36
59	3	12	9	144	36
60	3	10	9	100	30
61	3	13	9	169	39
62	3	12	9	144	36
63	3	12	9	144	36
64	3	14	9	196	42
Jumlah	<b>199</b>	<b>821</b>	<b>625</b>	<b>10625</b>	<b>2565</b>

$$r \text{ hitung} = \frac{n(\sum XY) - (\sum X)(\sum Y)}{\sqrt{\{n\sum X^2 - (\sum X)^2\}\{n\sum Y^2 - (\sum Y)^2\}}}$$

$$= \frac{64(2565) - (199)(821)}{\sqrt{\{64(625) - (199)^2\}\{64(10625) - (821)^2\}}}$$

$$= 0,5065$$

$$t \text{ hitung} = \frac{r\sqrt{n-2}}{\sqrt{1-r^2}}$$

$$= \frac{0,5065\sqrt{64-2}}{\sqrt{1-(0,5065)^2}}$$

$$= 4,626 \text{ (Valid)}$$

$$r_i \text{ hitung} = \frac{2rb}{1+rb} = \frac{2 \cdot 0,5065}{1+0,5065} = 0,672 \text{ (Reliabel)}$$

## 2. Pertanyaan nomor 3

no	X	Y	X <sup>2</sup>	Y <sup>2</sup>	XY
1	3	12	9	144	36
2	3	13	9	169	39
3	3	13	9	169	39
4	3	13	9	169	39
5	3	11	9	121	33
6	3	12	9	144	36
7	3	13	9	169	39
8	3	11	9	121	33
9	3	14	9	196	42
10	3	11	9	121	33
11	3	13	9	169	39
12	3	11	9	121	33
13	3	12	9	144	36
14	3	11	9	121	33
15	3	13	9	169	39
16	3	14	9	196	42
17	3	14	9	196	42
18	3	13	9	169	39
19	3	14	9	196	42
20	3	13	9	169	39
21	3	13	9	169	39
22	4	14	16	196	56
23	3	13	9	169	39
24	4	13	16	169	52
25	3	14	9	196	42
26	2	11	4	121	22
27	3	13	9	169	39
28	3	12	9	144	36
29	3	12	9	144	36
30	3	13	9	169	39
31	4	16	16	256	64
32	3	15	9	225	45
33	4	16	16	256	64
34	3	15	9	225	45
35	4	14	16	196	56
36	3	12	9	144	36
37	3	12	9	144	36

38	3	12	9	144	36
39	3	13	9	169	39
40	3	13	9	169	39
41	3	13	9	169	39
42	3	13	9	169	39
43	4	14	16	196	56
44	3	13	9	169	39
45	4	15	16	225	60
46	3	12	9	144	36
47	3	13	9	169	39
48	3	12	9	144	36
49	3	14	9	196	42
50	3	12	9	144	36
51	3	12	9	144	36
52	3	12	9	144	36
53	3	12	9	144	36
54	3	14	9	196	42
55	3	14	9	196	42
56	3	12	9	144	36
57	3	12	9	144	36
58	3	12	9	144	36
59	3	12	9	144	36
60	2	10	4	100	20
61	3	13	9	169	39
62	3	12	9	144	36
63	3	12	9	144	36
64	3	14	9	196	42
Jumlah	<b>197</b>	<b>821</b>	<b>615</b>	<b>10625</b>	<b>2544</b>

$$r \text{ hitung} = \frac{n(\sum XY) - (\sum X)(\sum Y)}{\sqrt{\{n\sum X^2 - (\sum X)^2\}\{n\sum Y^2 - (\sum Y)^2\}}}$$

$$= \frac{64(2544) - (197)(821)}{\sqrt{\{64(615) - (197)^2\}\{64(10625) - (821)^2\}}}$$

$$= 0,5955$$

$$t \text{ hitung} = \frac{r\sqrt{n-2}}{\sqrt{1-r^2}}$$

$$= \frac{0,5955\sqrt{64-2}}{\sqrt{1-(0,5955)^2}}$$

$$= 5,838 \text{ (Valid)}$$

$$r_i \text{ hitung} = \frac{2rb}{1+rb} = \frac{2 \cdot 0,5955}{1+0,5955} = 0,746 \text{ (Reliabel)}$$

### 3. Pertanyaan nomor 4

no	X	Y	X <sup>2</sup>	Y <sup>2</sup>	XY
1	3	12	9	144	36
2	3	13	9	169	39
3	3	13	9	169	39
4	3	13	9	169	39
5	2	11	4	121	22
6	3	12	9	144	36
7	3	13	9	169	39
8	2	11	4	121	22
9	4	14	16	196	56
10	2	11	4	121	22
11	3	13	9	169	39
12	2	11	4	121	22
13	3	12	9	144	36
14	2	11	4	121	22
15	4	13	16	169	52
16	4	14	16	196	56
17	4	14	16	196	56
18	3	13	9	169	39
19	4	14	16	196	56
20	3	13	9	169	39
21	3	13	9	169	39
22	3	14	9	196	42
23	3	13	9	169	39
24	3	13	9	169	39
25	3	14	9	196	42
26	3	11	9	121	33
27	3	13	9	169	39
28	3	12	9	144	36
29	3	12	9	144	36
30	3	13	9	169	39
31	4	16	16	256	64
32	4	15	16	225	60

33	4	16	16	256	64
34	3	15	9	225	45
35	3	14	9	196	42
36	3	12	9	144	36
37	3	12	9	144	36
38	3	12	9	144	36
39	4	13	16	169	52
40	4	13	16	169	52
41	3	13	9	169	39
42	3	13	9	169	39
43	3	14	9	196	42
44	4	13	16	169	52
45	4	15	16	225	60
46	3	12	9	144	36
47	3	13	9	169	39
48	3	12	9	144	36
49	4	14	16	196	56
50	3	12	9	144	36
51	3	12	9	144	36
52	3	12	9	144	36
53	3	12	9	144	36
54	3	14	9	196	42
55	4	14	16	196	56
56	4	12	16	144	48
57	3	12	9	144	36
58	3	12	9	144	36
59	3	12	9	144	36
60	2	10	4	100	20
61	3	13	9	169	39
62	3	12	9	144	36
63	3	12	9	144	36
64	4	14	16	196	56
Jumlah	<b>202</b>	<b>821</b>	<b>658</b>	<b>10625</b>	<b>2622</b>

$$r \text{ hitung} = \frac{n(\sum XY) - (\sum X)(\sum Y)}{\sqrt{\{n\sum X^2 - (\sum X)^2\}\{n\sum Y^2 - (\sum Y)^2\}}}$$

$$= \frac{64(2622) - (202)(821)}{\sqrt{\{64(658) - (202)^2\}\{64(10625) - (821)^2\}}}$$



$$= 0,7042$$

$$t \text{ hitung} = \frac{r\sqrt{n-2}}{\sqrt{1-r^2}}$$

$$= \frac{0,7042\sqrt{64-2}}{\sqrt{1-(0,7042)^2}}$$

$$= 7,808 \text{ (Valid)}$$

$$r_i \text{ hitung} = \frac{2rb}{1+rb} = \frac{2 \cdot 0,7042}{1+0,7042} = 0,826 \text{ (Reliabel)}$$

#### B.Reability/Keandalan

no	Pertanyaan				Jumlah
	1	2	3	4	
1	3	4	4	3	14
2	4	3	3	3	13
3	3	3	3	3	13
4	3	3	3	3	12
5	3	3	3	3	12
6	3	3	3	3	12
7	3	3	3	3	12
8	3	3	3	3	12
9	3	3	4	3	13
10	3	3	3	3	12
11	3	3	3	3	12
12	3	3	3	4	13
13	3	3	3	3	12
14	3	3	3	3	12
15	3	3	3	3	12
16	3	3	3	3	12
17	4	4	3	3	14
18	3	3	3	3	12
19	4	4	3	3	14
20	4	4	3	3	14
21	4	4	4	4	16
22	4	4	3	3	14
23	3	3	3	3	12
24	3	3	3	3	12

25	3	4	4	3	14
26	4	4	3	3	14
27	3	3	3	3	12
28	3	3	3	3	12
29	3	4	3	3	13
30	3	4	4	3	14
31	4	4	3	3	14
32	4	4	4	3	16
33	4	4	4	4	16
34	4	3	3	3	13
35	4	3	3	3	13
36	3	4	3	3	13
37	3	3	3	3	12
38	3	3	3	3	12
39	3	3	3	3	12
40	3	3	3	3	12
41	3	4	4	4	14
42	3	3	3	3	16
43	4	3	4	3	14
44	3	3	4	3	13
45	4	4	4	4	16
46	4	3	3	3	13
47	4	3	3	3	13
48	4	4	4	4	16
49	4	4	3	3	14
50	3	3	3	3	12
51	3	3	3	3	12
52	3	3	3	3	12
53	4	4	4	3	15
54	3	3	3	3	12
55	3	2	3	3	11
56	4	3	4	4	15
57	3	3	3	3	12
58	3	3	3	3	12
59	3	3	3	3	12
60	2	3	3	3	12
61	4	3	3	4	14
62	3	3	3	3	12
63	4	4	3	4	15
64	3	4	4	3	14
<b>Jumlah</b>	<b>213</b>	<b>212</b>	<b>207</b>	<b>201</b>	<b>839</b>

1. Pertanyaan nomor 2

no	X	Y	$X^2$	$Y^2$	XY
1	4	14	16	196	56
2	3	13	9	169	39
3	3	13	9	169	39
4	3	12	9	144	36
5	3	12	9	144	36
6	3	12	9	144	36
7	3	12	9	144	36
8	3	12	9	144	36
9	3	13	9	169	39
10	3	12	9	144	36
11	3	12	9	144	36
12	3	13	9	169	39
13	3	12	9	144	36
14	3	12	9	144	36
15	3	12	9	144	36
16	3	12	9	144	36
17	4	14	16	196	56
18	3	12	9	144	36
19	4	14	16	196	56
20	4	14	16	196	56
21	4	16	16	256	64
22	4	14	16	196	56
23	3	12	9	144	36
24	3	12	9	144	36
25	4	14	16	196	56
26	4	14	16	196	56
27	3	12	9	144	36
28	3	12	9	144	36
29	4	13	16	169	52
30	4	14	16	196	56
31	4	14	16	196	56
32	4	16	16	256	64
33	4	16	16	256	64
34	3	13	9	169	39
35	3	13	9	169	39
36	4	13	16	169	52
37	3	12	9	144	36
38	3	12	9	144	36
39	3	12	9	144	36
40	3	12	9	144	36
41	4	14	16	196	56

42	3	16	9	256	48
43	3	14	9	196	42
44	3	13	9	169	39
45	4	16	16	256	64
46	3	13	9	169	39
47	3	13	9	169	39
48	4	16	16	256	64
49	4	14	16	196	56
50	3	12	9	144	36
51	3	12	9	144	36
52	3	12	9	144	36
53	4	15	16	225	60
54	3	12	9	144	36
55	2	11	4	121	22
56	3	15	9	225	45
57	3	12	9	144	36
58	3	12	9	144	36
59	3	12	9	144	36
60	3	12	9	144	36
61	3	14	9	196	42
62	3	12	9	144	36
63	4	15	16	225	60
64	4	14	16	196	56
Jumlah	<b>212</b>	<b>839</b>	<b>718</b>	<b>11111</b>	<b>2810</b>

$$\begin{aligned}
 r \text{ hitung} &= \frac{n(\sum XY) - (\sum X)(\sum Y)}{\sqrt{\{n\sum X^2 - (\sum X)^2\}\{n\sum Y^2 - (\sum Y)^2\}}} \\
 &= \frac{64(2810) - (212)(839)}{\sqrt{\{64(718) - (212)^2\}\{64(11111) - (839)^2\}}} \\
 &= 0,7329
 \end{aligned}$$

$$\begin{aligned}
 t \text{ hitung} &= \frac{r\sqrt{n-2}}{\sqrt{1-r^2}} \\
 &= \frac{0,7329\sqrt{64-2}}{\sqrt{1-(0,7329)^2}}
 \end{aligned}$$

= 8,486 (Valid)

$$r_i \text{ hitung} = \frac{2rb}{1+rb} = \frac{2 \cdot 0,7329}{1+0,7329} = 0,846 \text{ (Reliabel)}$$

## 2. Pertanyaan nomor 3

no	X	Y	X <sup>2</sup>	Y <sup>2</sup>	XY
1	4	14	16	196	56
2	3	13	9	169	39
3	3	13	9	169	39
4	3	12	9	144	36
5	3	12	9	144	36
6	3	12	9	144	36
7	3	12	9	144	36
8	3	12	9	144	36
9	4	13	16	169	52
10	3	12	9	144	36
11	3	12	9	144	36
12	3	13	9	169	39
13	3	12	9	144	36
14	3	12	9	144	36
15	3	12	9	144	36
16	3	12	9	144	36
17	3	14	9	196	42
18	3	12	9	144	36
19	3	14	9	196	42
20	3	14	9	196	42
21	4	16	16	256	64
22	3	14	9	196	42
23	3	12	9	144	36
24	3	12	9	144	36
25	4	14	16	196	56
26	3	14	9	196	42
27	3	12	9	144	36
28	3	12	9	144	36
29	3	13	9	169	39
30	4	14	16	196	56
31	3	14	9	196	42
32	4	16	16	256	64
33	4	16	16	256	64
34	3	13	9	169	39

35	3	13	9	169	39
36	3	13	9	169	39
37	3	12	9	144	36
38	3	12	9	144	36
39	3	12	9	144	36
40	3	12	9	144	36
41	4	14	16	196	56
42	3	16	9	256	48
43	4	14	16	196	56
44	4	13	16	169	52
45	4	16	16	256	64
46	3	13	9	169	39
47	3	13	9	169	39
48	4	16	16	256	64
49	3	14	9	196	42
50	3	12	9	144	36
51	3	12	9	144	36
52	3	12	9	144	36
53	4	15	16	225	60
54	3	12	9	144	36
55	3	11	9	121	33
56	4	15	16	225	60
57	3	12	9	144	36
58	3	12	9	144	36
59	3	12	9	144	36
60	3	12	9	144	36
61	3	14	9	196	42
62	3	12	9	144	36
63	3	15	9	225	45
64	4	14	16	196	56
Jumlah	<b>207</b>	<b>839</b>	<b>681</b>	<b>11111</b>	<b>2737</b>

$$r \text{ hitung} = \frac{n(\sum XY) - (\sum X)(\sum Y)}{\sqrt{\{n\sum X^2 - (\sum X)^2\}\{n\sum Y^2 - (\sum Y)^2\}}}$$

$$= \frac{64(2737) - (207)(839)}{\sqrt{\{64(681) - (207)^2\}\{64(11111) - (839)^2\}}}$$

$$= 0,6506$$

$$t \text{ hitung} = \frac{r\sqrt{n-2}}{\sqrt{1-r^2}}$$

$$= \frac{0,6506\sqrt{64-2}}{\sqrt{1-(0,6506)^2}}$$

$$= 6,749 \text{ (Valid)}$$

$$r_i \text{ hitung} = \frac{2rb}{1+rb} = \frac{2 \cdot 0,6506}{1+0,6506} = 0,788 \text{ (Reliabel)}$$

### 3. Pertanyaan nomor 4

no	X	Y	X <sup>2</sup>	Y <sup>2</sup>	XY
1	3	14	9	196	42
2	3	13	9	169	39
3	3	13	9	169	39
4	3	12	9	144	36
5	3	12	9	144	36
6	3	12	9	144	36
7	3	12	9	144	36
8	3	12	9	144	36
9	3	13	9	169	39
10	3	12	9	144	36
11	3	12	9	144	36
12	4	13	16	169	52
13	3	12	9	144	36
14	3	12	9	144	36
15	3	12	9	144	36
16	3	12	9	144	36
17	3	14	9	196	42
18	3	12	9	144	36
19	3	14	9	196	42
20	3	14	9	196	42
21	4	16	16	256	64
22	3	14	9	196	42
23	3	12	9	144	36
24	3	12	9	144	36
25	3	14	9	196	42
26	3	14	9	196	42
27	3	12	9	144	36

28	3	12	9	144	36
29	3	13	9	169	39
30	3	14	9	196	42
31	3	14	9	196	42
32	3	16	9	256	48
33	4	16	16	256	64
34	3	13	9	169	39
35	3	13	9	169	39
36	3	13	9	169	39
37	3	12	9	144	36
38	3	12	9	144	36
39	3	12	9	144	36
40	3	12	9	144	36
41	4	14	16	196	56
42	3	16	9	256	48
43	3	14	9	196	42
44	3	13	9	169	39
45	4	16	16	256	64
46	3	13	9	169	39
47	3	13	9	169	39
48	4	16	16	256	64
49	3	14	9	196	42
50	3	12	9	144	36
51	3	12	9	144	36
52	3	12	9	144	36
53	3	15	9	225	45
54	3	12	9	144	36
55	3	11	9	121	33
56	4	15	16	225	60
57	3	12	9	144	36
58	3	12	9	144	36
59	3	12	9	144	36
60	3	12	9	144	36
61	4	14	16	196	56
62	3	12	9	144	36
63	4	15	16	225	60
64	3	14	9	196	42
Jumlah	<b>201</b>	<b>839</b>	<b>639</b>	<b>11111</b>	<b>2652</b>

$$r \text{ hitung} = \frac{n(\sum XY) - (\sum X)(\sum Y)}{\sqrt{\{n\sum X^2 - (\sum X)^2\}\{n\sum Y^2 - (\sum Y)^2\}}}$$



$$= \frac{64(2652) - (201)(839)}{\sqrt{\{64(639) - (201)^2\}\{64(11111) - (839)^2\}}}$$

$$= 0,5775$$

$$t \text{ hitung} = \frac{r\sqrt{n-2}}{\sqrt{1-r^2}}$$

$$= \frac{0,5775\sqrt{64-2}}{\sqrt{1-(0,5775)^2}}$$

$$= 5,572 \text{ (Valid)}$$

$$r_i \text{ hitung} = \frac{2rb}{1+rb} = \frac{2 \cdot 0,5775}{1+0,5775} = 0,732 \text{ (Reliabel)}$$

### C. Responsive/Tanggapan

no	Pertanyaan				Jumlah
	1	2	3	4	
1	3	3	3	3	<b>12</b>
2	3	3	3	3	<b>12</b>
3	3	3	3	3	<b>12</b>
4	2	3	3	3	<b>11</b>
5	2	3	3	3	<b>11</b>
6	3	3	3	3	<b>12</b>
7	3	3	3	3	<b>12</b>
8	3	3	3	3	<b>12</b>
9	2	3	3	3	<b>11</b>
10	3	2	3	3	<b>11</b>
11	2	3	3	3	<b>11</b>
12	3	2	3	3	<b>11</b>
13	4	4	3	3	<b>14</b>
14	2	3	3	3	<b>11</b>
15	2	3	3	3	<b>11</b>
16	2	3	3	3	<b>11</b>
17	2	3	3	4	<b>11</b>
18	3	3	3	3	<b>12</b>
19	3	3	3	3	<b>12</b>
20	3	3	3	3	<b>12</b>

21	3	3	3	3	<b>12</b>
22	3	3	3	3	<b>12</b>
23	3	4	3	3	<b>13</b>
24	3	2	3	3	<b>13</b>
25	4	4	4	3	<b>15</b>
26	3	3	3	3	<b>12</b>
27	3	3	3	3	<b>12</b>
28	4	4	4	4	<b>16</b>
29	3	3	3	4	<b>13</b>
30	3	4	3	4	<b>14</b>
31	3	3	3	4	<b>13</b>
32	4	3	3	4	<b>14</b>
33	4	4	3	3	<b>14</b>
34	3	3	3	3	<b>12</b>
35	3	3	3	3	<b>12</b>
36	4	3	3	3	<b>13</b>
37	3	3	3	3	<b>12</b>
38	3	3	3	3	<b>12</b>
39	3	3	3	3	<b>12</b>
40	3	3	3	3	<b>12</b>
41	3	3	2	3	<b>11</b>
42	3	3	3	3	<b>12</b>
43	4	3	3	3	<b>13</b>
44	3	3	3	3	<b>12</b>
45	4	3	4	3	<b>14</b>
46	3	3	3	3	<b>12</b>
47	3	3	3	4	<b>13</b>
48	4	3	4	3	<b>14</b>
49	4	3	3	3	<b>13</b>
50	3	3	3	3	<b>12</b>
51	3	3	3	3	<b>12</b>
52	3	3	3	3	<b>12</b>
53	4	4	3	4	<b>15</b>
54	4	4	3	3	<b>14</b>
55	3	3	3	3	<b>12</b>
56	4	4	4	3	<b>15</b>
57	3	3	3	3	<b>12</b>
58	3	3	3	3	<b>12</b>
59	3	3	3	3	<b>12</b>
60	3	2	3	3	<b>11</b>
61	4	4	3	3	<b>14</b>
62	3	3	3	3	<b>12</b>
63	4	4	4	3	<b>15</b>
64	4	3	4	3	<b>14</b>

<b>Jumlah</b>	<b>200</b>	<b>199</b>	<b>198</b>	<b>200</b>	<b>798</b>
---------------	------------	------------	------------	------------	------------

1. Pertanyaan nomor 2

no	X	Y	$X^2$	$Y^2$	XY
1	3	12	9	144	36
2	3	12	9	144	36
3	3	12	9	144	36
4	3	11	9	121	33
5	3	11	9	121	33
6	3	12	9	144	36
7	3	12	9	144	36
8	3	12	9	144	36
9	3	11	9	121	33
10	2	11	4	121	22
11	3	11	9	121	33
12	2	11	4	121	22
13	4	14	16	196	56
14	3	11	9	121	33
15	3	11	9	121	33
16	3	11	9	121	33
17	3	11	9	121	33
18	3	12	9	144	36
19	3	12	9	144	36
20	3	12	9	144	36
21	3	12	9	144	36
22	3	12	9	144	36
23	4	13	16	169	52
24	2	13	4	169	26
25	4	15	16	225	60
26	3	12	9	144	36
27	3	12	9	144	36
28	4	16	16	256	64
29	3	13	9	169	39
30	4	14	16	196	56
31	3	13	9	169	39
32	3	14	9	196	42
33	4	14	16	196	56
34	3	12	9	144	36
35	3	12	9	144	36
36	3	13	9	169	39
37	3	12	9	144	36
38	3	12	9	144	36
39	3	12	9	144	36

40	3	12	9	144	36
41	3	11	9	121	33
42	3	12	9	144	36
43	3	13	9	169	39
44	3	12	9	144	36
45	3	14	9	196	42
46	3	12	9	144	36
47	3	13	9	169	39
48	3	14	9	196	42
49	3	13	9	169	39
50	3	12	9	144	36
51	3	12	9	144	36
52	3	12	9	144	36
53	4	15	16	225	60
54	4	14	16	196	56
55	3	12	9	144	36
56	4	15	16	225	60
57	3	12	9	144	36
58	3	12	9	144	36
59	3	12	9	144	36
60	2	11	4	121	22
61	4	14	16	196	56
62	3	12	9	144	36
63	4	15	16	225	60
64	3	14	9	196	42
Jumlah	<b>199</b>	<b>798</b>	<b>633</b>	<b>10044</b>	<b>2507</b>

$$r \text{ hitung} = \frac{n(\sum XY) - (\sum X)(\sum Y)}{\sqrt{\{n\sum X^2 - (\sum X)^2\}\{n\sum Y^2 - (\sum Y)^2\}}}$$

$$= \frac{64(2507) - 199(798)}{\sqrt{\{64(633) - (199)^2\}\{64(10044) - (798)^2\}}}$$

$$= 0,7033$$

$$t \text{ hitung} = \frac{r\sqrt{n-2}}{\sqrt{1-r^2}}$$

$$= \frac{0,7033\sqrt{64-2}}{\sqrt{1-(0,7033)^2}}$$

= 7,798 (Valid)

$$r_i \text{ hitung} = \frac{2rb}{1+rb} = \frac{2 \cdot 0,7033}{1+0,7033} = 0,826 \text{ (Reliabel)}$$

## 2. Pertanyaan nomor 3

no	X	Y	X <sup>2</sup>	Y <sup>2</sup>	XY
1	3	12	9	144	36
2	3	12	9	144	36
3	3	12	9	144	36
4	3	11	9	121	33
5	3	11	9	121	33
6	3	12	9	144	36
7	3	12	9	144	36
8	3	12	9	144	36
9	3	11	9	121	33
10	3	11	9	121	33
11	3	11	9	121	33
12	3	11	9	121	33
13	3	14	9	196	42
14	3	11	9	121	33
15	3	11	9	121	33
16	3	11	9	121	33
17	3	11	9	121	33
18	3	12	9	144	36
19	3	12	9	144	36
20	3	12	9	144	36
21	3	12	9	144	36
22	3	12	9	144	36
23	3	13	9	169	39
24	3	13	9	169	39
25	4	15	16	225	60
26	3	12	9	144	36
27	3	12	9	144	36
28	4	16	16	256	64
29	3	13	9	169	39
30	3	14	9	196	42
31	3	13	9	169	39
32	3	14	9	196	42
33	3	14	9	196	42
34	3	12	9	144	36
35	3	12	9	144	36

36	3	13	9	169	39
37	3	12	9	144	36
38	3	12	9	144	36
39	3	12	9	144	36
40	3	12	9	144	36
41	2	11	4	121	22
42	3	12	9	144	36
43	3	13	9	169	39
44	3	12	9	144	36
45	4	14	16	196	56
46	3	12	9	144	36
47	3	13	9	169	39
48	4	14	16	196	56
49	3	13	9	169	39
50	3	12	9	144	36
51	3	12	9	144	36
52	3	12	9	144	36
53	3	15	9	225	45
54	3	14	9	196	42
55	3	12	9	144	36
56	4	15	16	225	60
57	3	12	9	144	36
58	3	12	9	144	36
59	3	12	9	144	36
60	3	11	9	121	33
61	3	14	9	196	42
62	3	12	9	144	36
63	4	15	16	225	60
64	4	14	16	196	56
Jumlah	<b>198</b>	<b>798</b>	<b>620</b>	<b>10044</b>	<b>2486</b>

$$\begin{aligned}
 r \text{ hitung} &= \frac{n(\sum XY) - (\sum X)(\sum Y)}{\sqrt{\{n\sum X^2 - (\sum X)^2\}\{n\sum Y^2 - (\sum Y)^2\}}} \\
 &= \frac{64(2486) - (198)(798)}{\sqrt{\{64(620) - (198)^2\}\{64(10044) - (798)^2\}}} \\
 &= 0,6502
 \end{aligned}$$

$$t \text{ hitung} = \frac{r\sqrt{n-2}}{\sqrt{1-r^2}}$$

$$= \frac{0,6502\sqrt{64-2}}{\sqrt{1-(0,6502)^2}}$$

$$= 6,744 \text{ (Valid)}$$

$$r_i \text{ hitung} = \frac{2rb}{1+rb} = \frac{2 \cdot 0,6502}{1+0,6502} = 0,788 \text{ (Reliabel)}$$

### 3. Pertanyaan nomor 4

no	X	Y	X <sup>2</sup>	Y <sup>2</sup>	XY
1	3	12	9	144	36
2	3	12	9	144	36
3	3	12	9	144	36
4	3	11	9	121	33
5	3	11	9	121	33
6	3	12	9	144	36
7	3	12	9	144	36
8	3	12	9	144	36
9	3	11	9	121	33
10	3	11	9	121	33
11	3	11	9	121	33
12	3	11	9	121	33
13	3	14	9	196	42
14	3	11	9	121	33
15	3	11	9	121	33
16	3	11	9	121	33
17	4	11	16	121	44
18	3	12	9	144	36
19	3	12	9	144	36
20	3	12	9	144	36
21	3	12	9	144	36
22	3	12	9	144	36
23	3	13	9	169	39
24	3	13	9	169	39
25	3	15	9	225	45
26	3	12	9	144	36
27	3	12	9	144	36
28	4	16	16	256	64
29	4	13	16	169	52
30	4	14	16	196	56
31	4	13	16	169	52
32	4	14	16	196	56

33	3	14	9	196	42
34	3	12	9	144	36
35	3	12	9	144	36
36	3	13	9	169	39
37	3	12	9	144	36
38	3	12	9	144	36
39	3	12	9	144	36
40	3	12	9	144	36
41	3	11	9	121	33
42	3	12	9	144	36
43	3	13	9	169	39
44	3	12	9	144	36
45	3	14	9	196	42
46	3	12	9	144	36
47	4	13	16	169	52
48	3	14	9	196	42
49	3	13	9	169	39
50	3	12	9	144	36
51	3	12	9	144	36
52	3	12	9	144	36
53	4	15	16	225	60
54	3	14	9	196	42
55	3	12	9	144	36
56	3	15	9	225	45
57	3	12	9	144	36
58	3	12	9	144	36
59	3	12	9	144	36
60	3	11	9	121	33
61	3	14	9	196	42
62	3	12	9	144	36
63	3	15	9	225	45
64	3	14	9	196	42
Jumlah	<b>200</b>	<b>798</b>	<b>632</b>	<b>10044</b>	<b>2503</b>

$$\begin{aligned}
 r \text{ hitung} &= \frac{n(\sum XY) - (\sum X)(\sum Y)}{\sqrt{\{n\sum X^2 - (\sum X)^2\}\{n\sum Y^2 - (\sum Y)^2\}}} \\
 &= \frac{64(2503) - (200)(798)}{\sqrt{\{64(632) - (200)^2\}\{64(10044) - (798)^2\}}} \\
 &= 0,3607
 \end{aligned}$$



$$t \text{ hitung} = \frac{r\sqrt{n-2}}{\sqrt{1-r^2}}$$

$$= \frac{0,3607\sqrt{64-2}}{\sqrt{1-(0,3607)^2}}$$

$$= 3,047 \text{ (Valid)}$$

$$r_i \text{ hitung} = \frac{2rb}{1+rb} = \frac{2 \cdot 0,3607}{1+0,3607} = 0,530 \text{ (Reliabel)}$$

#### D. Empati

no	Pertanyaan				Jumlah
	1	2	3	4	
1	3	3	3	2	11
2	3	3	3	3	12
3	3	2	3	3	11
4	2	3	3	3	11
5	3	2	3	3	11
6	3	2	3	3	11
7	3	2	3	3	11
8	3	2	3	3	11
9	3	2	3	3	11
10	3	2	3	3	11
11	3	2	3	3	11
12	3	2	3	2	10
13	3	3	4	4	14
14	3	2	3	2	10
15	3	2	3	3	11
16	2	2	3	3	10
17	2	2	3	3	10
18	3	3	3	3	12
19	3	3	3	3	12
20	3	3	3	3	12
21	3	3	3	3	12
22	3	3	3	4	13
23	3	3	3	3	12
24	3	2	3	2	10
25	3	4	3	3	13
26	3	3	3	3	12
27	3	3	3	3	12
28	4	4	4	4	16
29	3	3	4	3	13

30	3	3	4	3	13
31	3	3	3	3	12
32	4	3	3	3	13
33	4	3	3	3	13
34	4	3	3	3	13
35	3	3	3	3	12
36	3	3	4	3	13
37	3	3	3	3	12
38	3	3	3	3	12
39	3	3	3	3	12
40	3	3	3	3	12
41	3	3	4	3	12
42	2	3	3	3	11
43	3	4	3	3	13
44	3	4	3	4	14
45	4	3	4	4	15
46	3	3	3	3	12
47	3	2	3	3	11
48	4	4	3	3	14
49	3	3	3	4	13
50	3	3	3	3	12
51	3	3	3	3	12
52	3	2	3	3	11
53	4	4	4	4	16
54	3	3	3	4	13
55	3	3	3	3	12
56	4	4	4	3	15
57	3	3	3	3	12
58	3	3	3	3	12
59	3	3	3	2	11
60	3	3	2	2	10
61	3	3	3	4	13
62	3	3	3	3	12
63	4	3	4	3	14
64	4	3	4	4	15
Jumlah	<b>198</b>	<b>183</b>	<b>202</b>	<b>196</b>	<b>778</b>

1. Pertanyaan nomor 2

no	X	Y	$X^2$	$Y^2$	XY
1	3	11	9	121	33
2	3	12	9	144	36
3	2	11	4	121	22
4	3	11	9	121	33

5	2	11	4	121	22
6	2	11	4	121	22
7	2	11	4	121	22
8	2	11	4	121	22
9	2	11	4	121	22
10	2	11	4	121	22
11	2	11	4	121	22
12	2	10	4	100	20
13	3	14	9	196	42
14	2	10	4	100	20
15	2	11	4	121	22
16	2	10	4	100	20
17	2	10	4	100	20
18	3	12	9	144	36
19	3	12	9	144	36
20	3	12	9	144	36
21	3	12	9	144	36
22	3	13	9	169	39
23	3	12	9	144	36
24	2	10	4	100	20
25	4	13	16	169	52
26	3	12	9	144	36
27	3	12	9	144	36
28	4	16	16	256	64
29	3	13	9	169	39
30	3	13	9	169	39
31	3	12	9	144	36
32	3	13	9	169	39
33	3	13	9	169	39
34	3	13	9	169	39
35	3	12	9	144	36
36	3	13	9	169	39
37	3	12	9	144	36
38	3	12	9	144	36
39	3	12	9	144	36
40	3	12	9	144	36
41	3	12	9	144	36
42	3	11	9	121	33
43	4	13	16	169	52
44	4	14	16	196	56
45	3	15	9	225	45
46	3	12	9	144	36
47	2	11	4	121	22
48	4	14	16	196	56

49	3	13	9	169	39
50	3	12	9	144	36
51	3	12	9	144	36
52	2	11	4	121	22
53	4	16	16	256	64
54	3	13	9	169	39
55	3	12	9	144	36
56	4	15	16	225	60
57	3	12	9	144	36
58	3	12	9	144	36
59	3	11	9	121	33
60	3	10	9	100	30
61	3	13	9	169	39
62	3	12	9	144	36
63	3	14	9	196	42
64	3	15	9	225	45
Jumlah	<b>183</b>	<b>778</b>	<b>545</b>	<b>9582</b>	<b>2264</b>

$$r \text{ hitung} = \frac{n(\sum XY) - (\sum X)(\sum Y)}{\sqrt{\{n\sum X^2 - (\sum X)^2\}\{n\sum Y^2 - (\sum Y)^2\}}}$$

$$= \frac{64(2264) - (183)(778)}{\sqrt{\{64(545) - (183)^2\}\{64(9582) - (778)^2\}}}$$

$$= 0,7577$$

$$t \text{ hitung} = \frac{r\sqrt{n-2}}{\sqrt{1-r^2}}$$

$$= \frac{0,7577\sqrt{64-2}}{\sqrt{1-(0,7577)^2}}$$

$$= 9,150 \text{ (Valid)}$$

$$r_i \text{ hitung} = \frac{2rb}{1+rb} = \frac{2 \cdot 0,7577}{1+0,7577} = 0,862 \text{ (Reliabel)}$$

2. Pertanyaan nomor 3

no	X	Y	$X^2$	$Y^2$	XY
1	3	11	9	121	33
2	3	12	9	144	36
3	3	11	9	121	33
4	3	11	9	121	33
5	3	11	9	121	33
6	3	11	9	121	33
7	3	11	9	121	33
8	3	11	9	121	33
9	3	11	9	121	33
10	3	11	9	121	33
11	3	11	9	121	33
12	3	10	9	100	30
13	4	14	16	196	56
14	3	10	9	100	30
15	3	11	9	121	33
16	3	10	9	100	30
17	3	10	9	100	30
18	3	12	9	144	36
19	3	12	9	144	36
20	3	12	9	144	36
21	3	12	9	144	36
22	3	13	9	169	39
23	3	12	9	144	36
24	3	10	9	100	30
25	3	13	9	169	39
26	3	12	9	144	36
27	3	12	9	144	36
28	4	16	16	256	64
29	4	13	16	169	52
30	4	13	16	169	52
31	3	12	9	144	36
32	3	13	9	169	39
33	3	13	9	169	39
34	3	13	9	169	39
35	3	12	9	144	36
36	4	13	16	169	52
37	3	12	9	144	36
38	3	12	9	144	36
39	3	12	9	144	36
40	3	12	9	144	36
41	4	12	16	144	48
42	3	11	9	121	33

43	3	13	9	169	39
44	3	14	9	196	42
45	4	15	16	225	60
46	3	12	9	144	36
47	3	11	9	121	33
48	3	14	9	196	42
49	3	13	9	169	39
50	3	12	9	144	36
51	3	12	9	144	36
52	3	11	9	121	33
53	4	16	16	256	64
54	3	13	9	169	39
55	3	12	9	144	36
56	4	15	16	225	60
57	3	12	9	144	36
58	3	12	9	144	36
59	3	11	9	121	33
60	2	10	4	100	20
61	3	13	9	169	39
62	3	12	9	144	36
63	4	14	16	196	56
64	4	15	16	225	60
Jumlah	<b>202</b>	<b>778</b>	<b>648</b>	<b>9582</b>	<b>2480</b>

$$r \text{ hitung} = \frac{n(\sum XY) - (\sum X)(\sum Y)}{\sqrt{\{n\sum X^2 - (\sum X)^2\}\{n\sum Y^2 - (\sum Y)^2\}}}$$

$$= \frac{64(2480) - (202)(778)}{\sqrt{\{64(648) - (202)^2\}\{64(9582) - (778)^2\}}}$$

$$= 0,6781$$

$$t \text{ hitung} = \frac{r\sqrt{n-2}}{\sqrt{1-r^2}}$$

$$= \frac{0,6781\sqrt{64-2}}{\sqrt{1-(0,6781)^2}}$$

$$= 9,416 \text{ (Valid)}$$

$$r_i \text{ hitung} = \frac{2rb}{1+rb} = \frac{2 \cdot 0,6781}{1+0,6781} = 0,808 \text{ (Reliabel)}$$

### 3. Pertanyaan nomor 4

no	X	Y	X <sup>2</sup>	Y <sup>2</sup>	XY
1	2	11	4	121	22
2	3	12	9	144	36
3	3	11	9	121	33
4	3	11	9	121	33
5	3	11	9	121	33
6	3	11	9	121	33
7	3	11	9	121	33
8	3	11	9	121	33
9	3	11	9	121	33
10	3	11	9	121	33
11	3	11	9	121	33
12	2	10	4	100	20
13	4	14	16	196	56
14	2	10	4	100	20
15	3	11	9	121	33
16	3	10	9	100	30
17	3	10	9	100	30
18	3	12	9	144	36
19	3	12	9	144	36
20	3	12	9	144	36
21	3	12	9	144	36
22	4	13	16	169	52
23	3	12	9	144	36
24	2	10	4	100	20
25	3	13	9	169	39
26	3	12	9	144	36
27	3	12	9	144	36
28	4	16	16	256	64
29	3	13	9	169	39
30	3	13	9	169	39
31	3	12	9	144	36
32	3	13	9	169	39
33	3	13	9	169	39
34	3	13	9	169	39
35	3	12	9	144	36
36	3	13	9	169	39
37	3	12	9	144	36

38	3	12	9	144	36
39	3	12	9	144	36
40	3	12	9	144	36
41	3	12	9	144	36
42	3	11	9	121	33
43	3	13	9	169	39
44	4	14	16	196	56
45	4	15	16	225	60
46	3	12	9	144	36
47	3	11	9	121	33
48	3	14	9	196	42
49	4	13	16	169	52
50	3	12	9	144	36
51	3	12	9	144	36
52	3	11	9	121	33
53	4	16	16	256	64
54	4	13	16	169	52
55	3	12	9	144	36
56	3	15	9	225	45
57	3	12	9	144	36
58	3	12	9	144	36
59	2	11	4	121	22
60	2	10	4	100	20
61	4	13	16	169	52
62	3	12	9	144	36
63	3	14	9	196	42
64	4	15	16	225	60
Jumlah	<b>196</b>	<b>778</b>	<b>616</b>	<b>9582</b>	<b>2414</b>

$$r \text{ hitung} = \frac{n(\sum XY) - (\sum X)(\sum Y)}{\sqrt{\{n\sum X^2 - (\sum X)^2\}\{n\sum Y^2 - (\sum Y)^2\}}}$$

$$= \frac{64(2414) - (196)(778)}{\sqrt{\{64(616) - (196)^2\}\{64(9582) - (778)^2\}}}$$

$$= 0,7087$$

$$t \text{ hitung} = \frac{r\sqrt{n-2}}{\sqrt{1-r^2}}$$



$$= \frac{0,7087\sqrt{64-2}}{\sqrt{1-(0,7087)^2}}$$

=7,914 (Valid)

$$r_i \text{ hitung} = \frac{2rb}{1+rb} = \frac{2 \cdot 0,7087}{1+0,7087} = 0,830 \text{ (Reliabel)}$$

#### E. Assurance/Jaminan

no	Pertanyaan				Jumlah
	1	2	3	4	
1	4	4	3	4	15
2	3	3	2	3	13
3	3	3	2	3	11
4	3	3	2	3	11
5	3	3	3	4	13
6	3	3	3	3	12
7	3	3	3	2	11
8	2	3	2	3	10
9	3	3	2	3	11
10	3	3	2	3	11
11	3	3	2	3	11
12	2	3	2	2	9
13	4	4	4	4	16
14	3	3	2	2	10
15	3	3	3	3	12
16	3	3	3	3	12
17	3	3	2	3	11
18	3	3	3	3	12
19	4	3	3	3	13
20	4	3	3	3	13
21	4	4	3	3	14
22	3	3	3	3	11
23	4	3	3	3	12
24	2	2	2	3	9
25	3	3	3	4	13
26	3	3	3	3	12
27	3	3	3	3	12
28	4	4	4	3	16
29	3	3	2	3	11
30	3	3	2	3	11
31	3	3	3	4	13

32	3	3	4	4	14
33	4	3	3	3	13
34	4	3	3	3	13
35	3	3	3	3	12
36	3	3	3	3	12
37	3	3	3	3	12
38	3	3	3	3	12
39	3	3	3	3	12
40	3	3	3	3	12
41	2	3	2	2	9
42	3	3	3	3	12
43	3	3	3	3	12
44	3	3	3	3	12
45	4	3	4	4	14
46	4	3	3	3	13
47	3	3	2	3	11
48	4	4	4	4	14
49	3	3	3	3	12
50	3	3	3	3	12
51	3	3	3	3	12
52	2	2	3	2	9
53	3	4	3	3	13
54	3	3	3	3	12
55	3	3	3	3	12
56	4	4	4	3	15
57	3	3	3	3	12
58	3	3	3	3	12
59	2	3	3	3	11
60	2	3	3	3	11
61	3	3	3	4	13
62	3	3	3	3	12
63	4	4	4	4	16
64	4	3	4	4	15
Jumlah	<b>200</b>	<b>198</b>	<b>185</b>	<b>198</b>	<b>779</b>

1. Pertanyaan nomor 2

no	X	Y	$x^2$	$y^2$	XY
1	4	15	16	225	60
2	3	13	9	169	39
3	3	11	9	121	33
4	3	11	9	121	33

5	3	13	9	169	39
6	3	12	9	144	36
7	3	11	9	121	33
8	3	10	9	100	30
9	3	11	9	121	33
10	3	11	9	121	33
11	3	11	9	121	33
12	3	9	9	81	27
13	4	16	16	256	64
14	3	10	9	100	30
15	3	12	9	144	36
16	3	12	9	144	36
17	3	11	9	121	33
18	3	12	9	144	36
19	3	13	9	169	39
20	3	13	9	169	39
21	4	14	16	196	56
22	3	11	9	121	33
23	3	12	9	144	36
24	2	9	4	81	18
25	3	13	9	169	39
26	3	12	9	144	36
27	3	12	9	144	36
28	4	16	16	256	64
29	3	11	9	121	33
30	3	11	9	121	33
31	3	13	9	169	39
32	3	14	9	196	42
33	3	13	9	169	39
34	3	13	9	169	39
35	3	12	9	144	36
36	3	12	9	144	36
37	3	12	9	144	36
38	3	12	9	144	36
39	3	12	9	144	36
40	3	12	9	144	36
41	3	9	9	81	27
42	3	12	9	144	36
43	3	12	9	144	36
44	3	12	9	144	36
45	3	14	9	196	42
46	3	13	9	169	39
47	3	11	9	121	33
48	4	14	16	196	56

49	3	12	9	144	36
50	3	12	9	144	36
51	3	12	9	144	36
52	2	9	4	81	18
53	4	13	16	169	52
54	3	12	9	144	36
55	3	12	9	144	36
56	4	15	16	225	60
57	3	12	9	144	36
58	3	12	9	144	36
59	3	11	9	121	33
60	3	11	9	121	33
61	3	13	9	169	39
62	3	12	9	144	36
63	4	16	16	256	64
64	3	15	9	225	45
Jumlah	<b>198</b>	<b>779</b>	<b>622</b>	<b>9639</b>	<b>2438</b>

$$r \text{ hitung} = \frac{n(\sum XY) - (\sum X)(\sum Y)}{\sqrt{\{n\sum X^2 - (\sum X)^2\}\{n\sum Y^2 - (\sum Y)^2\}}}$$

$$= \frac{64(2438) - (198)(779)}{\sqrt{\{64(622) - (198)^2\}\{64(9639) - (779)^2\}}}$$

$$= 0,7263$$

$$t \text{ hitung} = \frac{r\sqrt{n-2}}{\sqrt{1-r^2}}$$

$$= \frac{0,7263\sqrt{64-2}}{\sqrt{1-(0,7263)^2}}$$

$$= 8,323 \text{ (Valid)}$$

$$r_i \text{ hitung} = \frac{2rb}{1+rb} = \frac{2 \cdot 0,7263}{1+0,7263} = 0,841 \text{ (Reliabel)}$$

2. Pertanyaan nomor 3

no	X	Y	$X^2$	$Y^2$	XY
1	3	15	9	225	45
2	2	13	4	169	26
3	2	11	4	121	22
4	2	11	4	121	22
5	3	13	9	169	39
6	3	12	9	144	36
7	3	11	9	121	33
8	2	10	4	100	20
9	2	11	4	121	22
10	2	11	4	121	22
11	2	11	4	121	22
12	2	9	4	81	18
13	4	16	16	256	64
14	2	10	4	100	20
15	3	12	9	144	36
16	3	12	9	144	36
17	2	11	4	121	22
18	3	12	9	144	36
19	3	13	9	169	39
20	3	13	9	169	39
21	3	14	9	196	42
22	3	11	9	121	33
23	3	12	9	144	36
24	2	9	4	81	18
25	3	13	9	169	39
26	3	12	9	144	36
27	3	12	9	144	36
28	4	16	16	256	64
29	2	11	4	121	22
30	2	11	4	121	22
31	3	13	9	169	39
32	4	14	16	196	56
33	3	13	9	169	39
34	3	13	9	169	39
35	3	12	9	144	36
36	3	12	9	144	36
37	3	12	9	144	36
38	3	12	9	144	36
39	3	12	9	144	36
40	3	12	9	144	36
41	2	9	4	81	18
42	3	12	9	144	36

43	3	12	9	144	36
44	3	12	9	144	36
45	4	14	16	196	56
46	3	13	9	169	39
47	2	11	4	121	22
48	4	14	16	196	56
49	3	12	9	144	36
50	3	12	9	144	36
51	3	12	9	144	36
52	3	9	9	81	27
53	3	13	9	169	39
54	3	12	9	144	36
55	3	12	9	144	36
56	4	15	16	225	60
57	3	12	9	144	36
58	3	12	9	144	36
59	3	11	9	121	33
60	3	11	9	121	33
61	3	13	9	169	39
62	3	12	9	144	36
63	4	16	16	256	64
64	4	15	16	225	60
Jumlah	<b>185</b>	<b>779</b>	<b>557</b>	<b>9639</b>	<b>2298</b>

$$r \text{ hitung} = \frac{n(\sum XY) - (\sum X)(\sum Y)}{\sqrt{\{n\sum X^2 - (\sum X)^2\}\{n\sum Y^2 - (\sum Y)^2\}}}$$

$$= \frac{64(2298) - (185)(779)}{\sqrt{\{64(557) - (185)^2\}\{64(9639) - (779)^2\}}}$$

$$= 0,7817$$

$$t \text{ hitung} = \frac{r\sqrt{n-2}}{\sqrt{1-r^2}}$$

$$= \frac{0,7817\sqrt{64-2}}{\sqrt{1-(0,7817)^2}}$$

$$= 13,179 \text{ (Valid)}$$

$$r_i \text{ hitung} = \frac{2rb}{1+rb} = \frac{2 \cdot 0,7817}{1+0,7817} = 0,877 \text{ (Reliabel)}$$

### 3. Pertanyaan nomor 4

no	X	Y	X <sup>2</sup>	Y <sup>2</sup>	XY
1	4	15	16	225	60
2	3	13	9	169	39
3	3	11	9	121	33
4	3	11	9	121	33
5	4	13	16	169	52
6	3	12	9	144	36
7	2	11	4	121	22
8	3	10	9	100	30
9	3	11	9	121	33
10	3	11	9	121	33
11	3	11	9	121	33
12	2	9	4	81	18
13	4	16	16	256	64
14	2	10	4	100	20
15	3	12	9	144	36
16	3	12	9	144	36
17	3	11	9	121	33
18	3	12	9	144	36
19	3	13	9	169	39
20	3	13	9	169	39
21	3	14	9	196	42
22	3	11	9	121	33
23	3	12	9	144	36
24	3	9	9	81	27
25	4	13	16	169	52
26	3	12	9	144	36
27	3	12	9	144	36
28	3	16	9	256	48
29	3	11	9	121	33
30	3	11	9	121	33
31	4	13	16	169	52
32	4	14	16	196	56
33	3	13	9	169	39
34	3	13	9	169	39
35	3	12	9	144	36
36	3	12	9	144	36
37	3	12	9	144	36

38	3	12	9	144	36
39	3	12	9	144	36
40	3	12	9	144	36
41	2	9	4	81	18
42	3	12	9	144	36
43	3	12	9	144	36
44	3	12	9	144	36
45	4	14	16	196	56
46	3	13	9	169	39
47	3	11	9	121	33
48	4	14	16	196	56
49	3	12	9	144	36
50	3	12	9	144	36
51	3	12	9	144	36
52	2	9	4	81	18
53	3	13	9	169	39
54	3	12	9	144	36
55	3	12	9	144	36
56	3	15	9	225	45
57	3	12	9	144	36
58	3	12	9	144	36
59	3	11	9	121	33
60	3	11	9	121	33
61	4	13	16	169	52
62	3	12	9	144	36
63	4	16	16	256	64
64	4	15	16	225	60
Jumlah	<b>198</b>	<b>779</b>	<b>628</b>	<b>9639</b>	<b>2445</b>

$$\begin{aligned}
 r \text{ hitung} &= \frac{n(\sum XY) - (\sum X)(\sum Y)}{\sqrt{\{n\sum X^2 - (\sum X)^2\}\{n\sum Y^2 - (\sum Y)^2\}}} \\
 &= \frac{64(2445) - (198)(779)}{\sqrt{\{64(628) - (198)^2\}\{64(9639) - (779)^2\}}} \\
 &= 0,7101
 \end{aligned}$$

$$t \text{ hitung} = \frac{r\sqrt{n-2}}{\sqrt{1-r^2}}$$



$$= \frac{0,7101\sqrt{64-2}}{\sqrt{1-(0,7170)}}$$

$$=8,621 \text{ (Valid)}$$

$$r_i \text{ hitung} = \frac{2rb}{1+rb} = \frac{2 \cdot 0,7817}{1+0,7817} = 0,830 \text{ (Reliabel)}$$

Lampiran 5 : t Tabel dan r Tabel

1. r Tabel

Tabel r untuk df = 51 - 100					
df = (N-2)	Tingkat signifikansi untuk uji satu arah				
	0.05	0.025	0.01	0.005	0.0005
	Tingkat signifikansi untuk uji dua arah				
	0.1	0.05	0.02	0.01	0.001
51	0.2284	0.2706	0.3188	0.3509	0.4393
52	0.2262	0.2681	0.3158	0.3477	0.4354
53	0.2241	0.2656	0.3129	0.3445	0.4317
54	0.2221	0.2632	0.3102	0.3415	0.4280
55	0.2201	0.2609	0.3074	0.3385	0.4244
56	0.2181	0.2586	0.3048	0.3357	0.4210
57	0.2162	0.2564	0.3022	0.3328	0.4176
58	0.2144	0.2542	0.2997	0.3301	0.4143
59	0.2126	0.2521	0.2972	0.3274	0.4110
60	0.2108	0.2500	0.2948	0.3248	0.4079
61	0.2091	0.2480	0.2925	0.3223	0.4048
62	0.2075	0.2461	0.2902	0.3198	0.4018
63	0.2058	0.2441	0.2880	0.3173	0.3988
64	0.2042	0.2423	0.2858	0.3150	0.3959
65	0.2027	0.2404	0.2837	0.3126	0.3931
66	0.2012	0.2387	0.2816	0.3104	0.3903
67	0.1997	0.2369	0.2796	0.3081	0.3876
68	0.1982	0.2352	0.2776	0.3060	0.3850

2. t Tabel

Titik Persentase Distribusi t (df = 41 – 80)

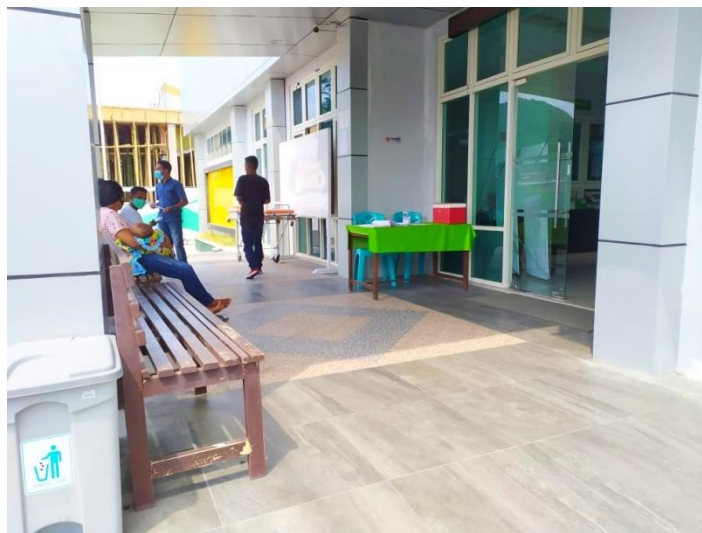
Pr \ df	0.25 0.50	0.10 0.20	0.05 0.10	0.025 0.050	0.01 0.02	0.005 0.010	0.001 0.002
41	0.68052	1.30254	1.68288	2.01954	2.42080	2.70118	3.30127
42	0.68038	1.30204	1.68195	2.01808	2.41847	2.69807	3.29595
43	0.68024	1.30155	1.68107	2.01669	2.41625	2.69510	3.29089
44	0.68011	1.30109	1.68023	2.01537	2.41413	2.69228	3.28607
45	0.67998	1.30065	1.67943	2.01410	2.41212	2.68959	3.28148
46	0.67986	1.30023	1.67866	2.01290	2.41019	2.68701	3.27710
47	0.67975	1.29982	1.67793	2.01174	2.40835	2.68456	3.27291
48	0.67964	1.29944	1.67722	2.01063	2.40658	2.68220	3.26891
49	0.67953	1.29907	1.67655	2.00958	2.40489	2.67995	3.26508
50	0.67943	1.29871	1.67591	2.00856	2.40327	2.67779	3.26141
51	0.67933	1.29837	1.67528	2.00758	2.40172	2.67572	3.25789
52	0.67924	1.29805	1.67469	2.00665	2.40022	2.67373	3.25451
53	0.67915	1.29773	1.67412	2.00575	2.39879	2.67182	3.25127
54	0.67906	1.29743	1.67356	2.00488	2.39741	2.66998	3.24815
55	0.67898	1.29713	1.67303	2.00404	2.39608	2.66822	3.24515
56	0.67890	1.29685	1.67252	2.00324	2.39480	2.66651	3.24226
57	0.67882	1.29658	1.67203	2.00247	2.39357	2.66487	3.23948
58	0.67874	1.29632	1.67155	2.00172	2.39238	2.66329	3.23680
59	0.67867	1.29607	1.67109	2.00100	2.39123	2.66176	3.23421
60	0.67860	1.29582	1.67065	2.00030	2.39012	2.66028	3.23171
61	0.67853	1.29558	1.67022	1.99962	2.38905	2.65886	3.22930
62	0.67847	1.29536	1.66980	1.99897	2.38801	2.65748	3.22696
63	0.67840	1.29513	1.66940	1.99834	2.38701	2.65615	3.22471
64	0.67834	1.29492	1.66901	1.99773	2.38604	2.65485	3.22253

**Lampiran 6: Penyebaran kuisisioner**





Dok.Kuisisioner diberikan kepada pasien yang datang ke Puskesmas Kota Ende



Dok.Tempat pengambilan nomor antrian Puskesmas Kota Ende



Dok.Tempat parkir Puskesmas Kota Ende



Dok.Ruang tunggu Puskesmas Kota Ende